

Kent Flood Risk Management Committee Meeting.

Task Force Team – to build a plan to reduce storm overflows.



The Storm Overflow Task Force

“ONETEAM”

- The task force is a dedicated team that is central to Southern Water’s drive towards significantly reducing the use of storm overflows by 2030, and managing wastewater flows within catchments.
- The establishment of the task force indicates Southern Water’s commitment to set targets and is a highly important workstream within the business.
- The task force is responsible for delivering five pathfinder projects over the next two years. The task force will seek to establish strong partnerships to ensure their success. Our Pathfinders in Kent are:-
 - Deal
 - Swalecliffe
 - Margate
- There are 3 main types of intervention to reduce flooding and storm overflow use.
- [Weblink - Storm Overflows \(southernwater.co.uk\)](https://www.southernwater.co.uk/storm-overflows)



“Slow the Flow” trial on passive water butts installation



Slow the Flow door knock in Deal with Councillor Bond



Household & Non-Household SuDs Opportunities - Planters

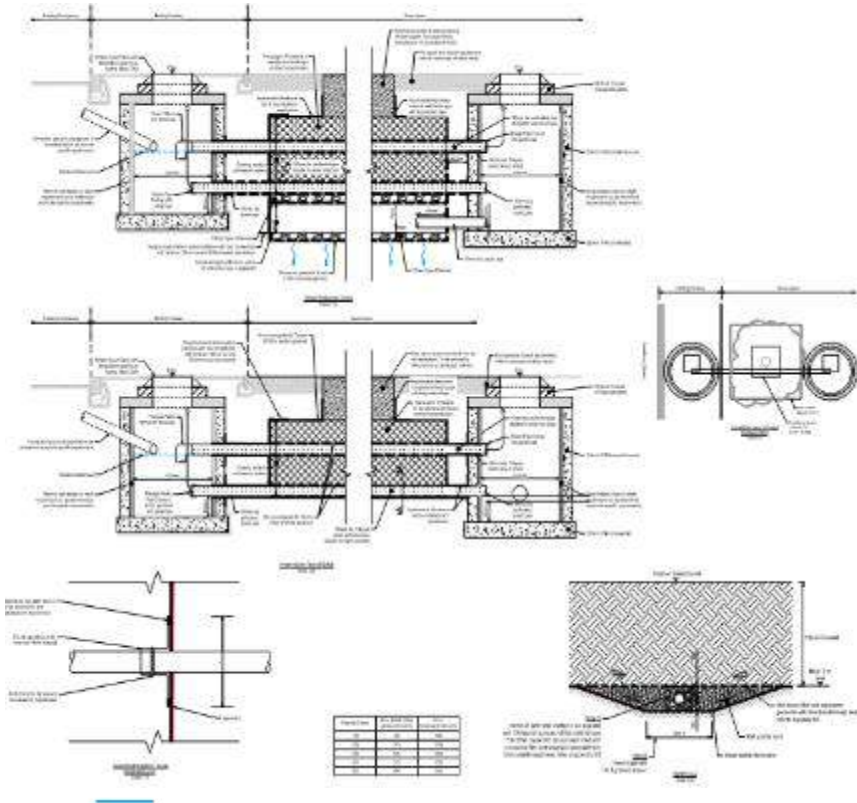


SuDSPlanters Living wall
24 m² area - 10 plants and 1000 litres water
Proven 1 SuDS - 800 litres per week



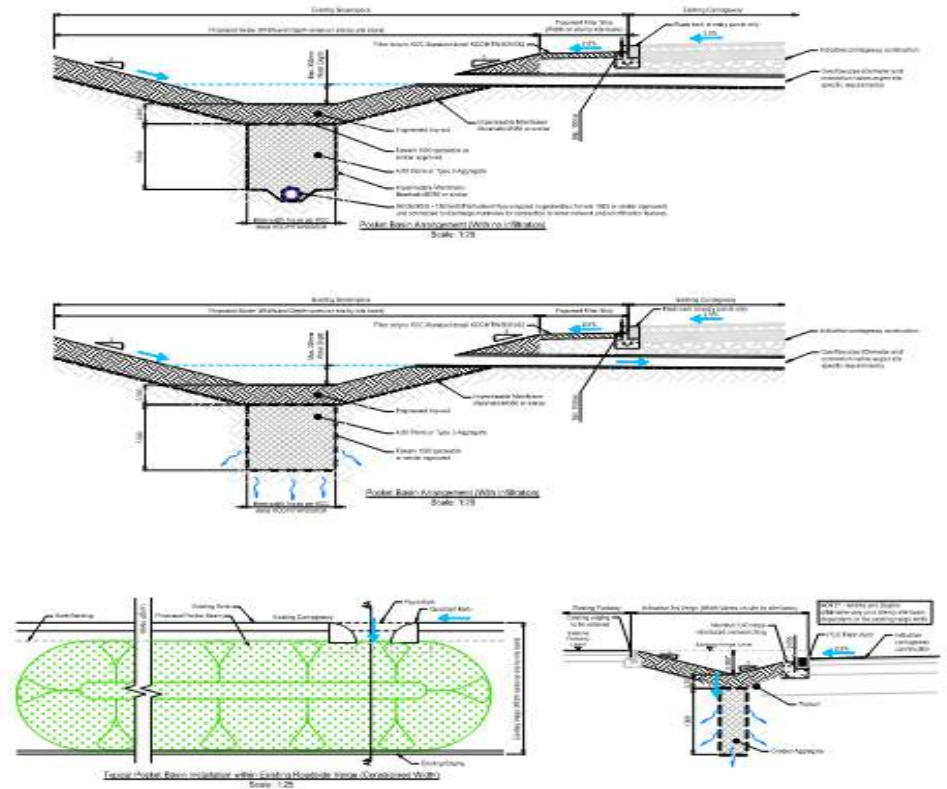
SuDS Construction Details

Outline Approval – Tree Pit



SuDS Construction Details

Outline Approval – Pocket Basin

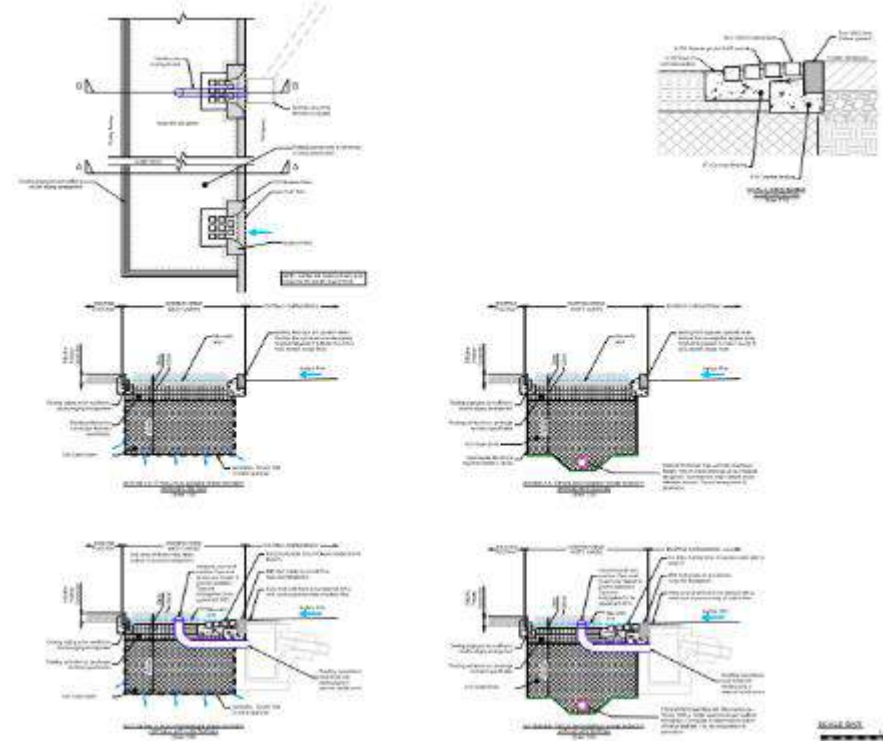
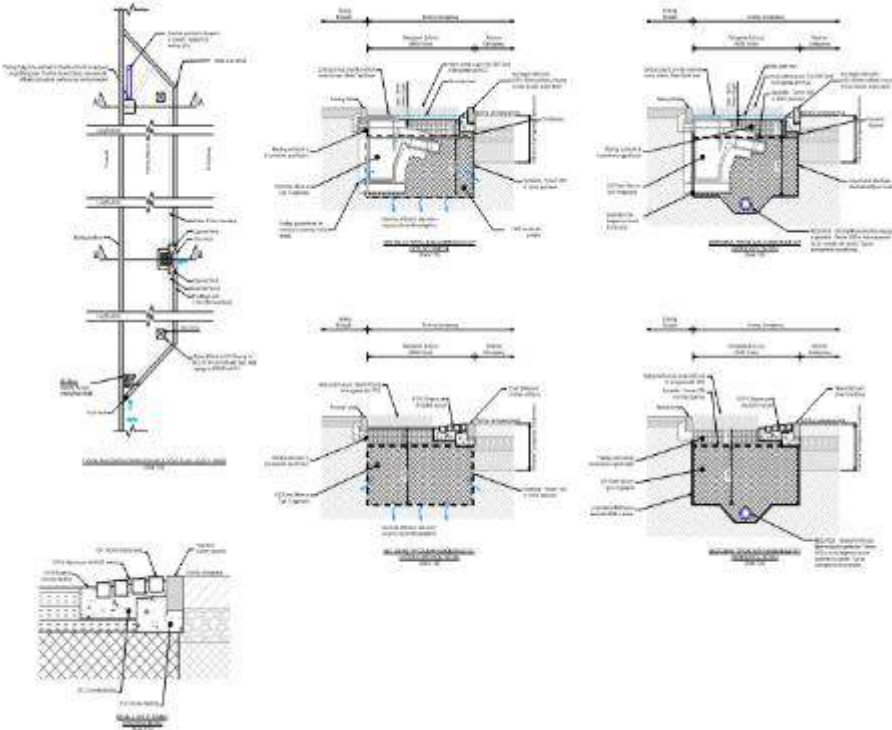


SuDS Construction Details

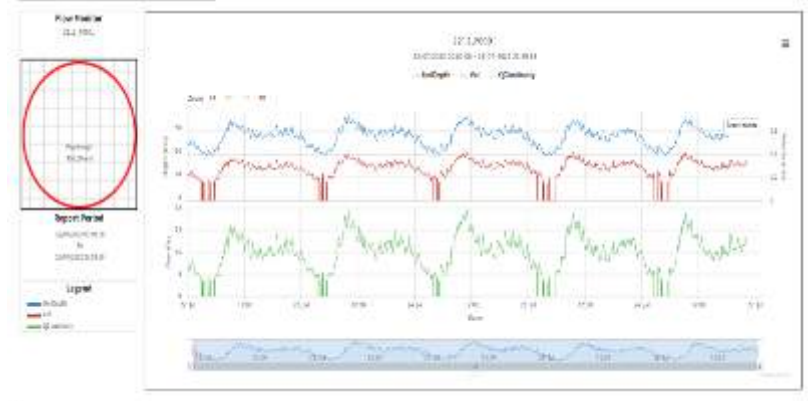
Outline Approval – Rain Garden Build Out

SuDS Construction Details

Outline Approval – Roadside Rain Garden

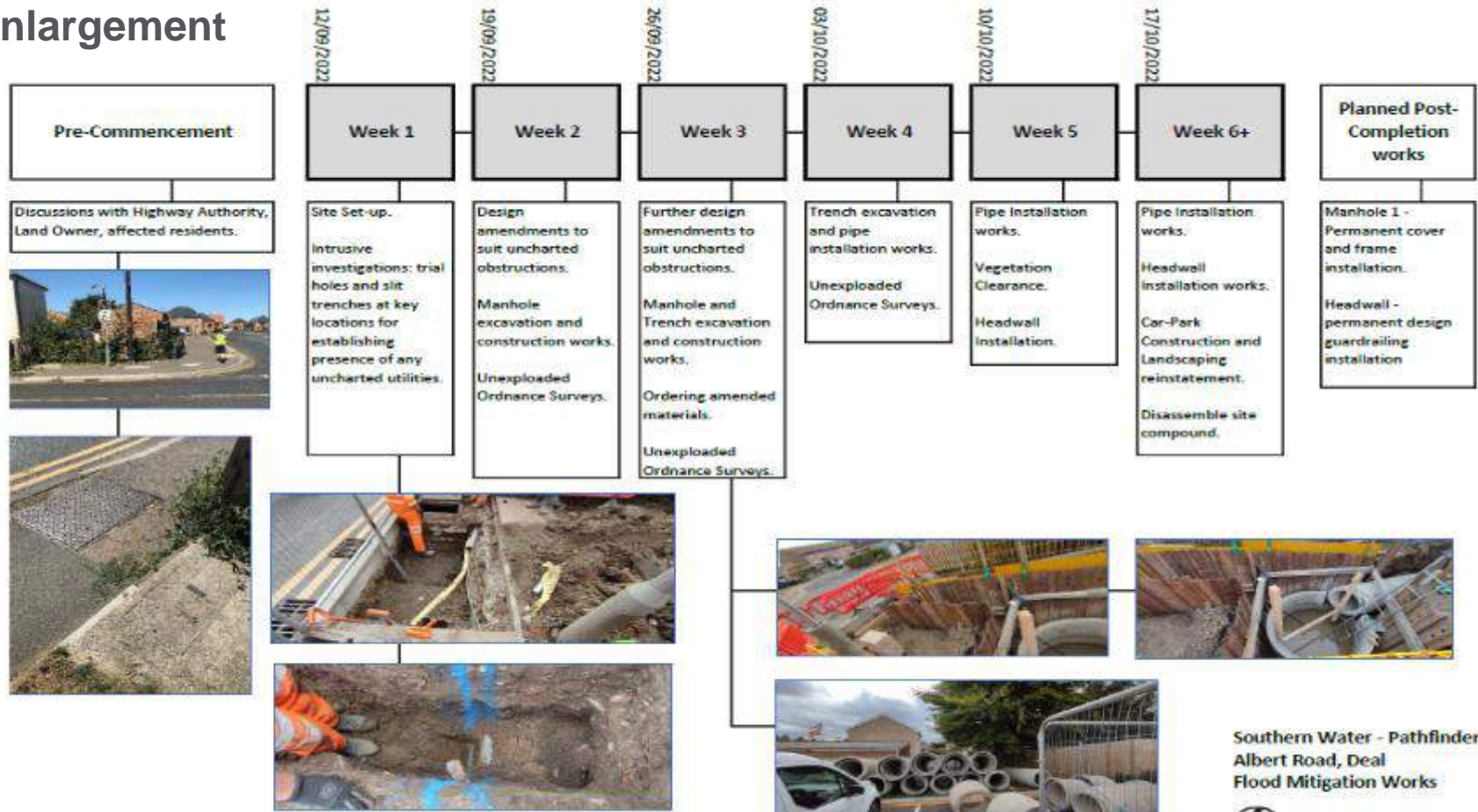


Much more - Connectivity Surveys, Sewer Level Monitors, Rain Gauges and Flow monitoring



Albert Rd – Deal Surface Water Enlargement

Timeline



Southern Water - Pathfinders
Albert Road, Deal
Flood Mitigation Works



**Great collaborative working with KCC Highways –
Albert Rd gully enlargement completed this year**



Works completed





Legend :-

- WEAT Catchment Boundary
- Sewer

Storage Type

- Relief Sewer
- Storage Tank

- 1 - North Deal Bypass Sewer & Golf Road Tank
- 2 - Town Center (North) Relief Sewer
- 3 - Middle Deal Road Relief Sewer
- 4 - Albert Road Relief Sewer
- 5 - Town Center (South) Relief Sewer
- 6 - Orchard Avenue Tank
- 7 - Victoria Park Tank
- 8 - Hamilton Road Tank
- 9 - Rectory Road Tank
- 10 - Walmer WPS Tank/Walmer Paddock Tank
- 11 - Dola Avenue Tank
- 12 - Cross Road Tank
- 13 - Mill Road Relief Sewer
- 14 - Deal Castle Transfer Sewer



Working with Streetworks team in KCC on Traffic Management for MTS to complete the surveys.



Golf Road WPS remedial works (1)

- Scope of works required to improve the resilience, safety and performance of Golf Road WPS agreed following Platinum Health Check and PathFinder reviews
- Works will be delivered by AFECO as Principal Designer and Principal Contractor – appointments and programme being generated for an anticipated start on site date in November
- Remedial works split into 6 areas to allow focus on key issues and allocate funding:
 - **AREA 1 – TRANSFER PUMPS** incorporating chemical dosing area and rising main
 - **AREA 2 – STORM PUMPS** incorporating storm station, screening, booster pumps and storm loop
 - **AREA 3 – COMPOUND** incorporating building and documentation
 - **AREA 4 – MCC** incorporating replacement of MCC and telemetry
 - **AREA 5 – MISCELLANEOUS** incorporating lifting and labelling
 - **AREA 6 – GENERATOR** incorporating review of size once other works complete / refurbishment



Golf Road WPS remedial works (2)

- Critical areas of work which will be primary focus are **AREA 1 – TRANSFER PUMPS** and **AREA 2 – STORM PUMPS**
- Both areas cover the critical works required to increase pass forward flow rates and improve storm control so the Permit conditions can be met (flows currently limited due to concerns over the integrity of the rising main)
- Documents drafted / in train for comment and approval ahead of start on site – new station control philosophy; ALM; plan for monitoring and remedials works / relining of rising main; CCP; programme and costs
- Other AREAS will be developed in parallel to optimise time on site



Development of design and documentation

Approvals process

Start on site to implement as much as possible ahead of mains work



What we are doing in Operations: -

1. What have we done at Swalecliffe Wastewater Treatment Works since November 2021.
2. Swalecliffe WTW Short Sea Outfall Replacement
3. Gorrell Tank Whitstable
4. We've taken action to reduce the impact of stormwater releases on Swalecliffe Brook





A charity to help, support and represent people at risk of flooding



Meet the Team



GROUNDWORK



